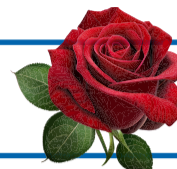
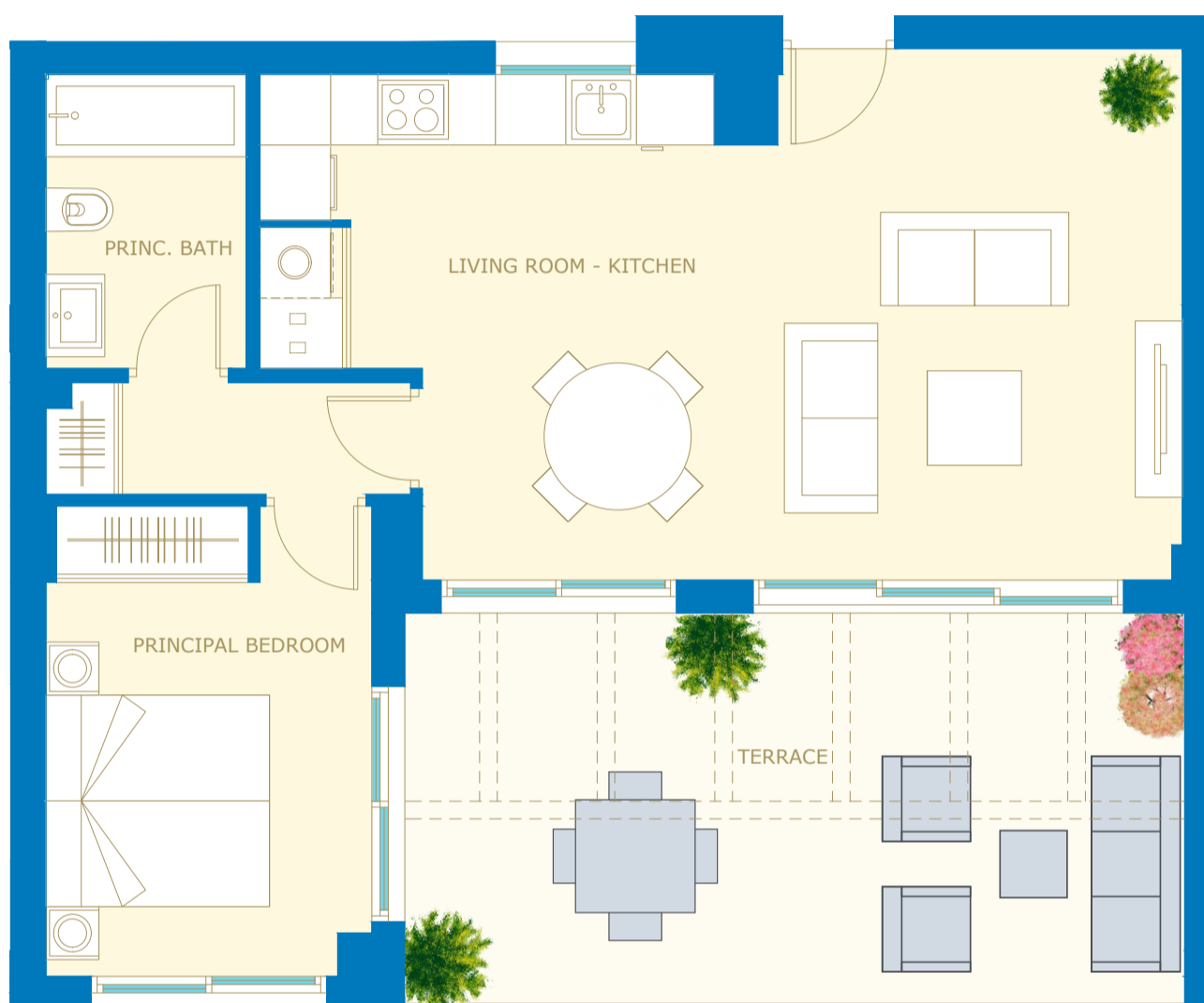


ROSAL P2



1 BEDROOM PENTHOUSE
ÁTICO 1 HABITACIONES



INTERIOR	60,24 m²
EXTERIOR (terraces)	22,34 m²
TOTAL	82,58 m²

Built+ comm area / Área construida + ZZCC	67,89 m ²
Sup. útil vivienda / Living area S/Decreto 218/05	50,16 m ²
Built area / Sup.construida S/Decreto 218/05	68,55 m ²
Living room-kitchen / Salón-comedor-cocina	31,58 m ²
Principal bedroom / Dormitorio principal	13,83 m ²
En-suite bathroom / Baño principal	4,25 m ²
Terrace / Terraza	20,68 m ²

También incluye: / Also includes:

1 plaza de garage / 1 parking space N° 177	12,5 m ²
1 plaza de garage / 1 parking space N° 175	12,5 m ²

